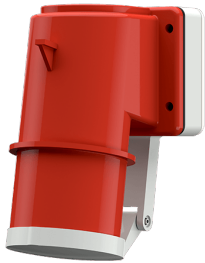


Fasevender plugg for påmontering

Bestillingsnr. 21241

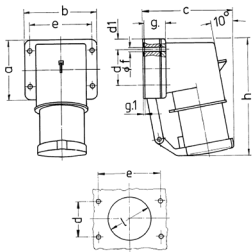


- screw terminals with hinged lid

Tekniske spesifikasjoner

Ampere	32 A
Poler	5 p
Volt	400 V
Klokkeposisjon	6 h
Hertz	50-60 Hz
Tilkoblingsmåte	skrukontakt
Kontakt	standard
Kapslingsgrad	IP44
Vekt	362 g
Kontrollmerke	VDE, EAC, CQC

Dimensjoner



Drawing 2 MB 43	Amp. Poles	16		32		
		4	5	3	4	5
Dim. in mm	a	85	85	75	75	75
	b	85	85	90	90	90
	c	104	106	115	115	117
	d	64	64	45	45	45
	d1	10	10	13	13	13
	e	64	64	78	78	78
	f	5.5	5.5	5.5	5.5	5.5
	g	27	27	27	27	27
	g.1	2	2	1	1	1
	h	140	140	150	150	150
	l	50	50	55	55	55
Terminal for cond. cross section (mm ²) min.-max.		1	1	2.5	2.5	2.5
		-2.5	-2.5	-6	-6	-6