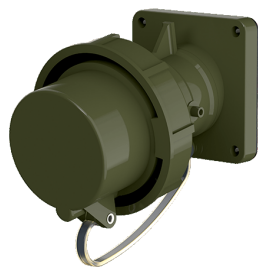


Panel mounted inlet TM
Part no. 23249

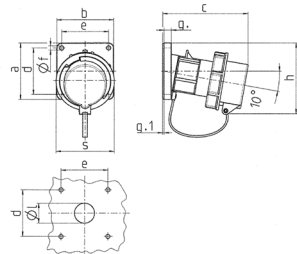


- screw terminals
- highly heat resistant contact carrier
- nickel plated contacts
- with protective cap
- (form BP)

Technical specifications

Ampere	32 A
Poles	3 p
Voltage	230 V
Clock position	6 h
Hertz	50-60 Hz
Connection technology	Screw terminals
Contact	nickel plated contacts, highly heat resistant contact carrier
Protection type	IP 67
Weight	314 g
Declaration of Conformity	VDE, EAC

Drawing



Drawing 2 MB 62	Amp. Poles	16			32			63		
		3	5	5	3	4	5	3	4	5
Dim. in mm	a	85	85	85	85	85	85	108	108	108
	b	85	85	85	85	85	85	101	101	101
	c	132	132	131	131	137	137	164	164	164
	d	70	70	70	70	70	70	85	85	85
	e	70	70	70	70	70	70	77	77	77
	f	6.3	6.3	6.3	6.3	6.3	6.3	6.5	6.5	6.5
	g	11	11	11	11	11	11	12	12	12
	g.1	2	2	2	2	2	2	2	2	2
	h	100	107	108	108	111	111	130	130	130
	s	70	87	94	94	102	102	114	114	114
	l	30	30	30	30	30	30	40	40	40
	Terminal for cond. cross	1	1	2,5	2,5	2,5	2,5	6	6	6
	section (mm²) min.-max.	—2,5	—2,5	—6	—6	—6	—6	—16	—16	—16