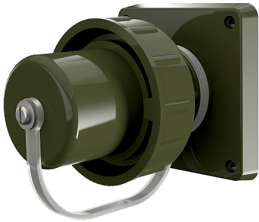


Panel mounted inlet SCHUKO® TM

Part no. 10853

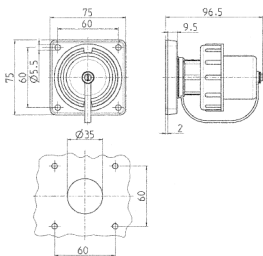


- screw terminals
- with double PE-conductor acc. to german and french-belgian standard
- with bayonet ring
- protective cap attached by a strap (formAP)

Technical specifications

| | |
|---------------------------|-----------------|
| Ampere | 16 A |
| Poles | 2 p+E |
| Voltage | 230 V |
| Connection technology | Screw terminals |
| Contact | standard |
| Protection type | IP 68 |
| Shutter | false |
| Weight | 139 g |
| Declaration of Conformity | VDE, EAC |

Drawing



Drawing
2 MB 164
Dim. in mm